

Ham Close Newsletter

October 2017

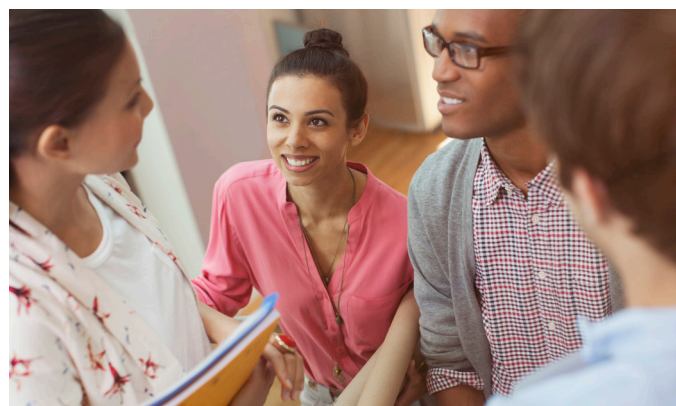


Thanks for helping us meet your needs

As you'll know we recently carried out a housing needs assessment via an independent research company (BMG Research). The aim of this research was to help us to make sure that any new homes built on Ham Close will meet customers' needs.

We wanted to say a big 'thank you' to everyone who took part and carried out this survey. If you didn't have a chance to carry out the survey and would like to, it's not too late. We can still send a form to you, simply drop us an email at ham.close@rhp.org.uk. The survey will take no more than 10 minutes to complete and we can reassure you that any information you provide will remain within RHP and won't be shared externally.

You'll need to register to attend this event. The registration link is located within the news item at the very top of the homepage (www.hamclose.co.uk).



Voices of Ham Close

Each month we're going to share with you a Ham Close customer quote relating to how they feel about the regeneration project. Paul said:

"I hope that the new development doesn't look too built up and keeps with the local landscape."

If you'd like to raise your voice and have your thoughts shared let us know by emailing

ham.close@rhp.org.uk.



Homeowner event

We wanted to give you a reminder that we have a Homeowner event taking place this month. The details are as follows:

Date:	Wednesday 4 October
Time:	6pm – 8pm
Location:	The Woodville Centre, Woodville Road, Richmond, TW10 7QW

The event will be an informative and practical session where we'll address many of your questions and concerns and will provide further details on the homeowner offer.

Drop down for the low down

If you have a question or would like to find out more about the regeneration, don't forget to come along to one of our monthly drop-in sessions. These sessions are held at Ham library and can also act as additional opportunities to come and talk to us if you can't make the Homeowner event.

The upcoming drop-ins will take place on:

Tuesday, 10 October: 6pm– 8pm

Wednesday, 18 October: 6pm– 8pm



Stake your claim

The Stakeholder Reference Group represents the views of local people (particularly Ham Close residents), local groups and other stakeholders regarding the potential redevelopment of Ham Close. The Group also have an opportunity to learn more about the proposals for Ham Close as they're developed and to have an early preview of consultation material prior to going out to the public.



Those attending the Stakeholder Reference Group will also be asked to feed information back to their members and local residents and encourage them to take part in the various consultation and engagement opportunities.

We're looking for more residents of Ham Close to come and join the group. If you would like to be involved in the future of Ham Close then this opportunity might well be for you. If you'd like to become a member or find out more information please email ham.close@rhp.org.uk.

You're also able to view the minutes from past Stakeholder Reference Group meetings at the following address:

www.hamclose.co.uk/stakeholder-reference-group

Stay connected

Keep up to date with all the latest news on the Ham Close website at www.hamclose.co.uk and if you have a comment or question email ham.close@rhp.org.uk.

